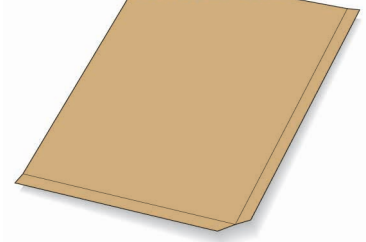


ELTETE *SOLID*

SLIP SHEETS
TRANSFER SHEETS



ECONOMICAL

RECYCLABLE

HYGIENIC

DURABLE



Switch to push/pull
-pallets and forget
all about heavy, bulky,
expensive wooden pallets.



Wooden pallets in transport applications will soon be history due to their weight, price and high handling costs.

ECONOMICAL

Compare it yourself
The weight of an Eltete Solid Slip Sheet is less than 10% of that of a wooden pallet, so even when loading smaller amounts, you will save money. By using slip sheets instead of wooden pallets, you can save as much as 15,000 kg for each 100 pallets. What's more, the space requirement of a SOLID slip sheet is only 1% of that of a wooden pallet. You can actually fit 1000 slip sheets into the same space occupied by 10 wooden pallets.

RECYCLABLE

Environmentally-friendly - ReCy 5815
All Eltete Solid Slip Sheets are manufactured according to ReCy - standards. They are made entirely of kraft liner. Due to the untreated, natural raw material used, slip sheets are 100% recyclable. The use of slip sheets is silent and clean, so it contributes to an improved working environment. The slip sheet is a safe, hygienic transport tool, which requires no treatment with poisons or steam (as wooden pallets do).

QUICK PROFIT

To use slip sheets all you need is a push/pull -device, which you can get from your nearest fork-lift truck supplier. The device is suitable for any standard fork-lift truck and the investment repays itself faster than you would think. You will get more free container space and save in handling and purchasing costs.

HYGIENIC

Due to the extremely hygienic material used in Eltete Solid slip sheets, they can be used in the demanding conditions of the food and medical industries. The FDA, BGVV and the Dutch Warenwet have already approved Solid slip sheets as suitable for use in food packaging.

ELTETE SOLID

QUALITY OPTIONS

ELTETE SOLID-N

- strong and tough
- ideal for normal conditions

ELTETE SOLID-EG

- contains extra glue for superior moisture resistance
- ideal for humid conditions

ELTETE SOLID-PE

- has a PE-lamination on one or both sides, for ultimate moisture protection
- ideal for long storage in humid conditions

ELTETE LTD

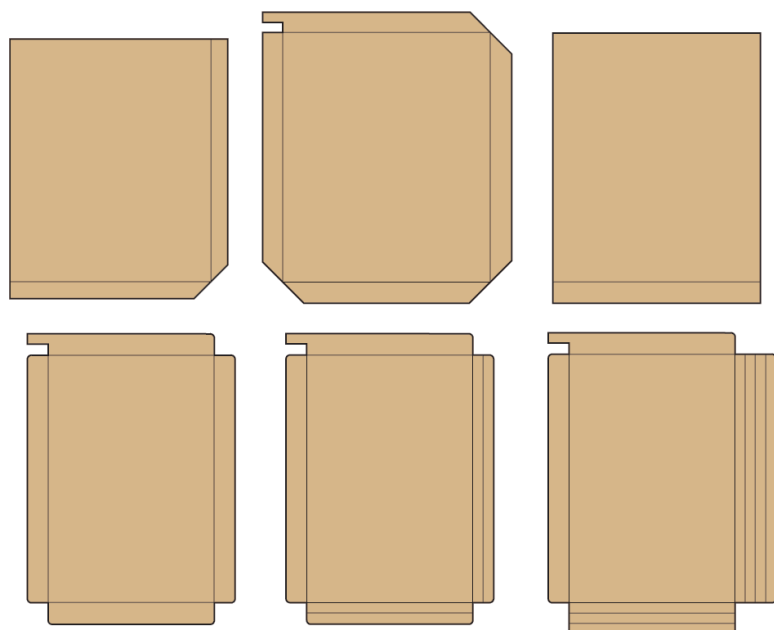
Eltete Ltd is a carton board refiner specialised in transport packaging solutions. The company has a global sales and production network, the head office is located in Loviisa, Finland. Eltete is a leading manufacturer of edgeboards and other packaging products and has more than 15 years experience in slip sheet production.

PRINTING

Eltete Solid slip sheets can be printed according to customer requirements.

STANDARD SIZES

Eltete produces standard slip sheet models according to normal pallet sizes, but almost endless production possibilities mean that we can cater for your own individual need.



ELTETE Ltd.
P.O. Box 94
FIN-07901 Loviisa, Finland
Tel. +358 (0)19 51031
Fax +358 (0)19 510 3200
E-mail: info@eltete.com
Internet: www.eltete.com